

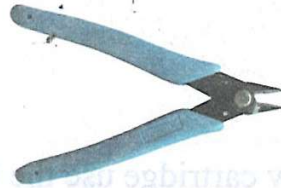
LASER TONER CARTRIDGE INSTRUCTION

HP M454/479 Series OEM Chip Recycle Operation Procedure

1. To disassemble the chip from OEM cartridge

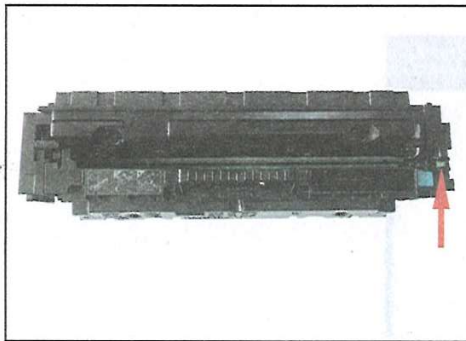


tweezers



Diagonal cutting pliers

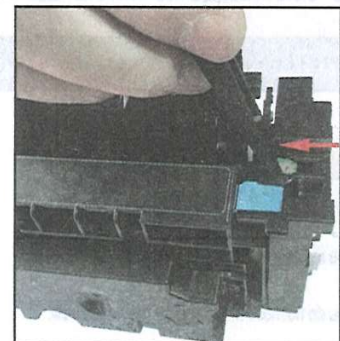
⚠ Please pay attention to use it and avoid entrained injury



(1) Remove the empty OEM cartridge from the printer, put it backside upwards on a table, find the chip position (as red arrow shown).

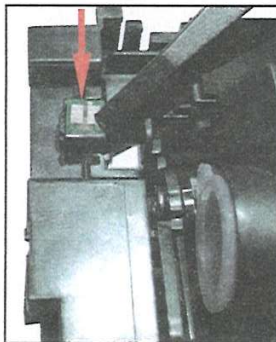


(2) Cut the cartridge rib beside chip by using pliers.



(3) Clamp the OEM chip with tweezers and remove it in the direction of the red arrow.

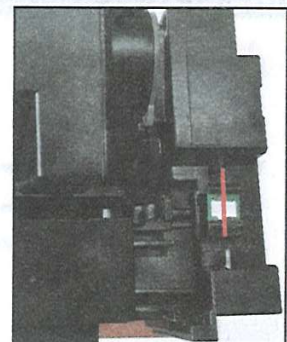
2. To assemble the chip on a new cartridge



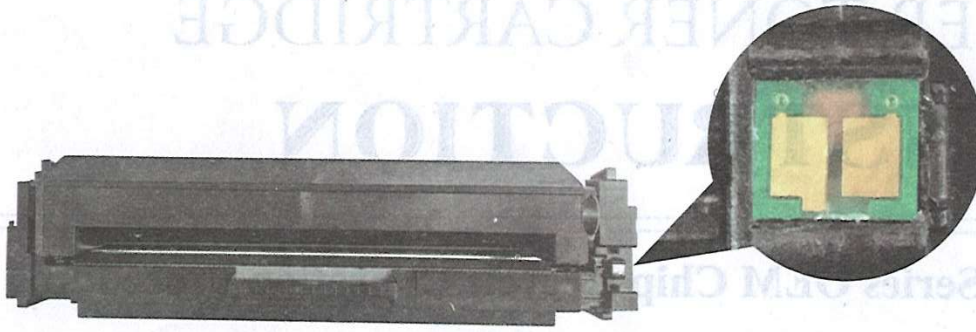
(1) Insert the chip diagonally into the chip slot in correct direction as shown.



(2) Use tweezers to press the chip in the direction of the red arrow, the chip is installed into the slot after hearing the click.



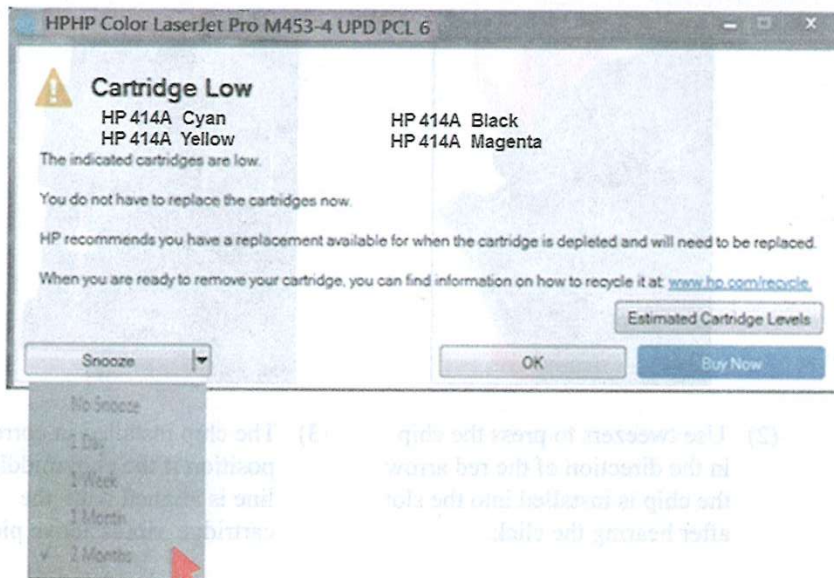
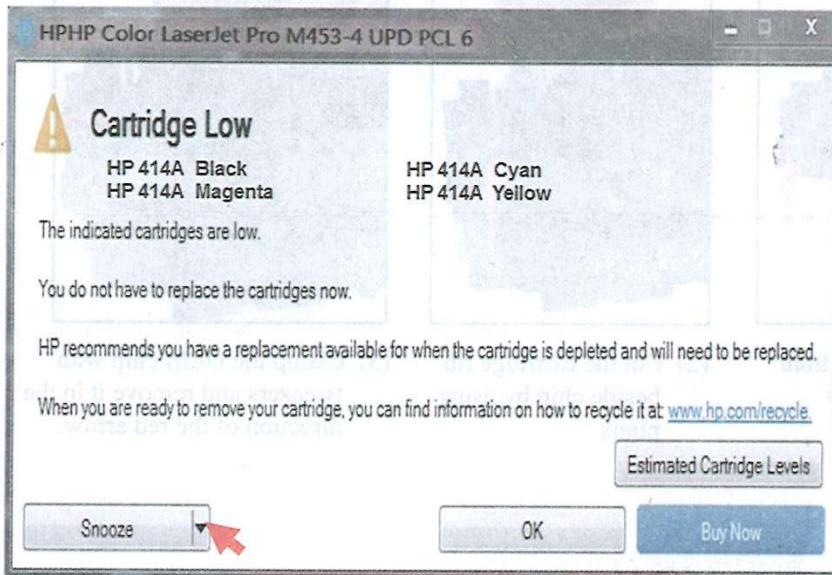
(3) The chip installed in correct position if the chip middle line is aligned with the cartridge rib (as above picture).



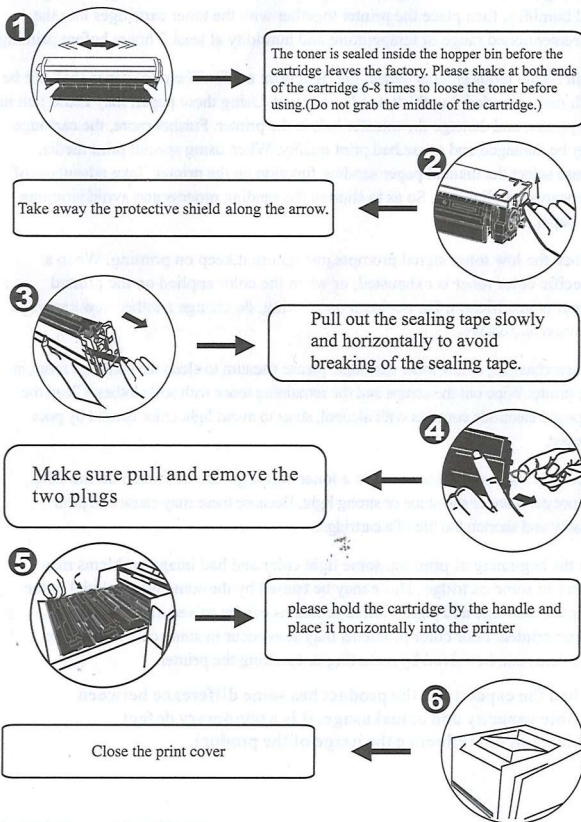
- (4) Please install the chip as above picture, the toner cartridge can not be recognized by printer if the chip not installed in position or installed in wrong direction.

Remarks

Due to the new cartridge use the OEM old chip, the computer will prompt “Cartridge Low” (as below picture) when you printing, please click “Snooze” and choose “2 month” to close the prompt. The cartridge is used up until low image density.



LASER TONER CARTRIDGE INSTRUCTION



Notes and Cautions

- 1.Environmental requirements: Toner Cartridge should be seated in the printer with the environmental temperature 10-30℃, relative humidity 20-80%, otherwise, bad printing is expected. If the printer is not in the aforementioned range of temperature and humidity, then place the printer together with the toner cartridges into the aforementioned range of temperature and humidity at least 2 hours before printing.
- 2.Print media requirements: Select the right print media. The print paper shall not be with nails, abraded, too thick, too hard or wet. Using these paper, may cause jam in the printer, and damage the transfer belt in the printer. Further more, the cartridge may be damaged and cause bad print quality. When using special print media, please select the manual paper sending function on the printer. Take advantage of the nearest sending rail. So as to shorten the sending process and avoid jamming the paper.
3. When the low toner signal prompts, just ignore it, keep on printing. When a specific color toner is exhausted, or when the color applied on the printed paper is insufficient, Do not keep on printing, do change another new cartridge as soon as possible.
4. When changing a new toner cartridge, please vacuum to clean the cartridge room in the printer. Wipe out the scraps and the remaining toner with soft clothes. Clean the exposed electrode contacts with alcohol, so as to avoid light color caused by poor contact.
5. The OPC is a core component in a toner cartridge. Do not touch on the OPC, do not put it under sun shine or strong light. Because these may cause bad print quality and shorten the life of a cartridge.
6. At the beginning of printing, some light color and bad image problems may occur in some cartridge. These may be caused by the some wet material in the printer, cartridge and paper. These problems can be solved after 10 or more paper printed. Poor color problems may also occur in some cartridge, these problems can be solved by restarting or resetting the printer.
7. When the capacity of the product has some difference between visible capacity and actual usage, it is a temporary defect, which will not influence the usage of the product.